



**ALASKA DIVISION OF HOMELAND SECURITY &
EMERGENCY MANAGEMENT**



SITUATION REPORT 22-286 • OCTOBER 13, 2022

Toll-Free 1.800.478.2337

Anchorage Area 907.428.7000

SEOC 907.428.7100

<p><u>SEOC Preparedness Level</u> Level 3 – Ongoing Incident</p>	<p>http://ready.alaska.gov</p>	<p><u>National Terrorism Advisory System:</u> Read the NTAS Bulletin here</p>
<p><u>Maritime Security (MARSEC)</u> Level:1-Minimum Appropriate Security Measures</p>	<p>WHO Novel Coronavirus Pandemic (COVID-19): 2019 Novel Coronavirus</p>	<p><u>Alaska Military Installation Force Protection Level:</u> FPCON Bravo</p>

(Significant changes from previous situation reports are in red.)

Significant Issues:

September Major Coastal Sea Storm

An incident specific SITREP for the West Coast Storm disaster is attached. This will be the last specific SITREP for this incident as incident operations have transitioned from response in the SEOC to recovery coordinated through the State/FEMA Joint Field Office.

October Major Coastal Sea Storm:

The SEOC has been in contact with boroughs and communities since Monday. There have been reports of minor damage but no requests for state assistance received by the SEOC from either borough thus far. The SEOC will continue to work with boroughs and communities to capture damage assessment information.

Information from this storm is included in the attached situation report for the Sept storm in the Branch 3 section.

Threat Level Changes:

None.

State of Alaska Department of Health (DOH)

The DOH is leading the State of Alaska COVID-19 Recovery, supported by the SEOC and other state departments as required.

For current COVID-19 information, see:

<https://covid19.alaska.gov/>

<https://www.cdc.gov/coronavirus/2019-ncov/index.html>

NTAS Bulletin

To read current or expired advisories, click the link below:

<https://www.dhs.gov/national-terrorism-advisory-system>

Travel Alerts and Conditions

For current driving conditions dial 511 or link to <https://511.alaska.gov/>

Barry Arm Landslide / Tsunami Risk

For the latest information on the Barry Arm Landslide and Tsunami risk, click here:

[DGGG Barry Arm Landslide and Tsunami Hazard](#)

Recent Earthquakes

USGS Earthquake Information: <http://earthquake.usgs.gov/>

National Tsunami Warning Center: <http://tsunami.gov/>

Alaska Volcanoes

Cleveland Alert Level: **Advisory** and Aviation Color Code: **Yellow**

Great Sitkin Alert Level: **Watch** and Aviation Color Code: **Orange**

Pavlof Alert Level: **Watch** and Aviation Color Code: **Orange**

Semisopchnoi Alert Level: **Advisory** and Aviation Color Code: **Yellow**

Trident Alert Level: **Advisory** and Aviation Color Code: **Yellow**

For Alaska Volcano updates, go to: <https://www.avo.alaska.edu/>

Air Quality Index (AQI) Advisories

For the most up to date Air Quality Index Advisories:

<http://dec.alaska.gov/Applications/Air/airtoolsweb/Home/Index>

Spills of Oil and Hazardous Substances

The ADEC Spill Prevention and Response page is located at:

<http://dec.alaska.gov/spar/ppr/spill-information/response/>

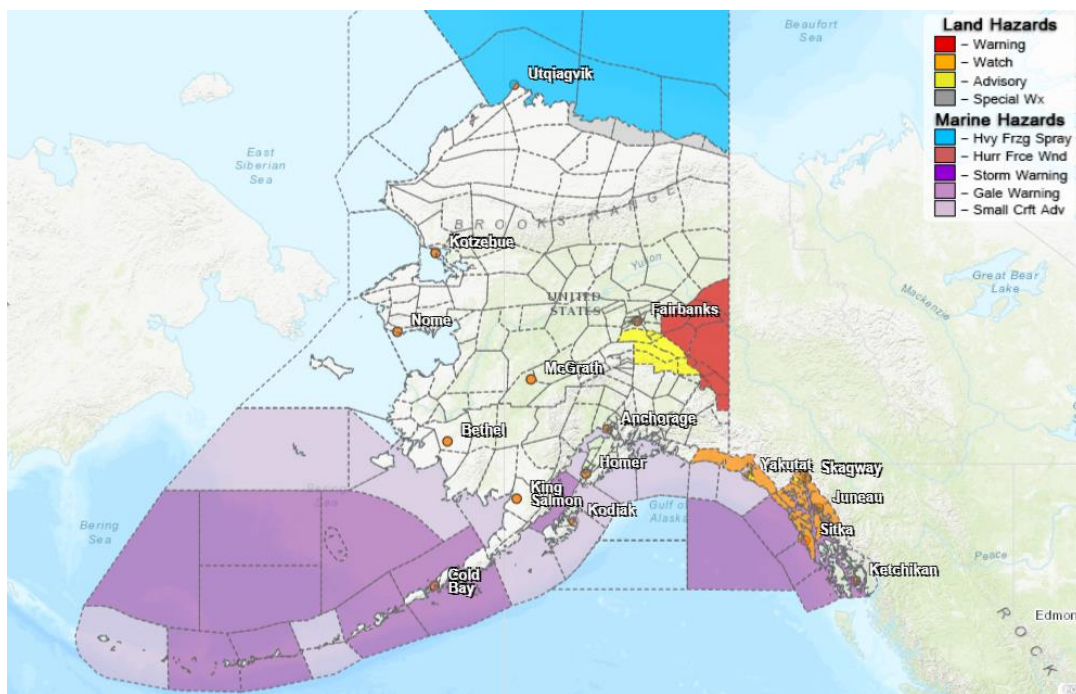
Alaska Cyber Security Information

State Employees may sign up for cyber security notifications and alerts at

<https://oit.alaska.gov/security>

CISA-Cybersecurity Services and Tools: www.cisa.gov/free-cybersecurity-services-and-tools

Significant Weather:



The following weather watches, warnings, or advisories have been issued:.

- Flood warning remains in effect until 7am Friday for Skagway due to excessive rainfall.
- Flood watch remains in effect through late Friday night for the Northern half of the Alaska Panhandle. Excessive runoff may result in flooding of rivers, creeks, streams, other low-lying areas and flood-prone locations. Isolated landslides are possible in areas of steep terrain.
- Flood advisories remain in effect until 7am Friday for the Haines Borough, Skagway, City and Borough of Juneau due to excessive run off.
- Elevated surf warning issued for the Central and Eastern Beaufort Sea Coasts through Friday.
- Winter storm warning in effect through Thursday morning for Copper River Basin. Heavy snow expected with total accumulations of 6 to 12 inches possible. Higher amounts of 12+ inches along the Richardson Highway south of Tonsina.

For more information and the most current weather, Watches / Warnings / Advisories go to:

<http://www.weather.gov/arh>.

The Next Situation Report: will be **14** October 2022. A significant change in the situation or the threat level will prompt an interim report. This report is posted on the internet at <https://ready.alaska.gov/sitrep>.

To register for email distribution, go to <http://list.state.ak.us/mailman/listinfo/dhsem.situation.report>. Direct questions regarding this report to the SEOC at 907-428-7100 or seoc@alaska.gov